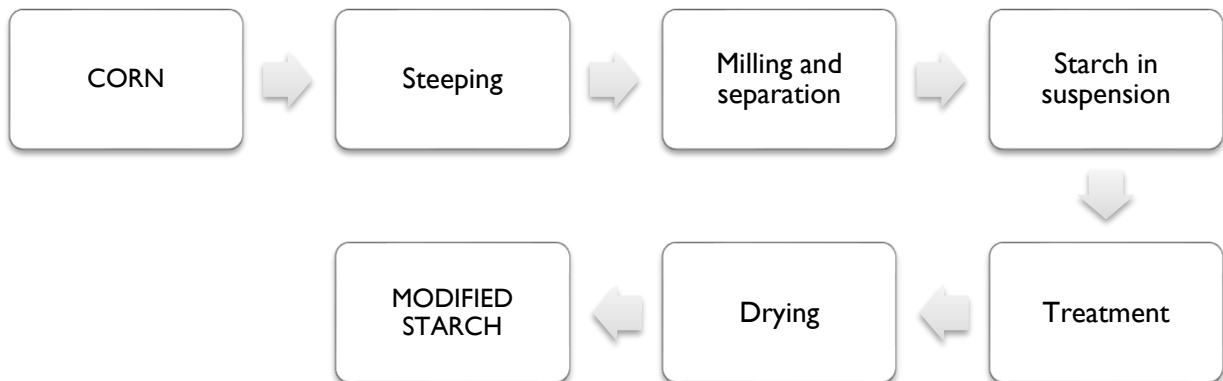


Mogi Guaçu, October 13, 2021

To whom it may concern,

Ref.: Process Flowchart – Modified starch

Our control measures are sieves, which guarantee the absence of contaminants above 2,0 mm, and metal detectors for ferrous, non-ferrous and stainless-steel fragments.
The flowchart for the ingredient mentioned above is shown below:



We are at your disposal for any further information.

Best regards,

Quality Assurance